



Addition Sheet

Polyroof 185 System

Balcony & Walkway Anti-Slip Finishes (Regular Foot Traffic)

Please note that this is an outline specification only and may be subject to further site investigation by Polyroof Products Ltd Technical Department.

1. Balcony & Walkway Anti-Slip Finishes

1.1. Introduction

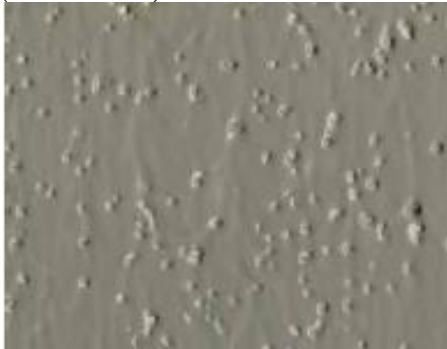
Anti-Slip media is to be used in conjunction with the Polyroof 185 System to provide a range of finishes suitable for regular foot traffic on balconies or walkways. The following needs to be carried out during the application of the Polyroof 185 waterproofing system.

1.2. Application

Apply Polyroof 185 Base Coat in accordance with manufacturer's instructions.

Anti-Slip Option 1 – Standard Anti-Slip

Apply Polyroof 185C Flexi-resin (Anti-Slip Version) at a minimum coverage rate of 0.6Litres/m² (1.68m²/Litre). Allow to cure.



Anti-Slip Option 2 – Mineral Slate Grit (Fully Blinded)

Apply Polyroof 185C Flexi-resin at a minimum coverage rate of 0.6Litres/m² (1.68m²/Litre) and whilst wet broadcast Mineral Slate Grit at a minimum coverage rate of 2.5kg/m². Once cured remove loose grit. Approximate finished coverage rate of grit will be 1.5kg/m² and the remaining grit may be recovered for future use.



'Blue mineral slate'



'Green mineral slate'

Anti-Slip Option 3 – Coarse Bauxite (Polygrit) (Fully Blinded)

Apply Polyroof 185C Flexi-resin at a minimum coverage rate of 0.6Litres/m² (1.68m²/Litre) and whilst wet broadcast Coarse Bauxite (Polygrit) at a minimum coverage rate of 3.5 - 4kg/m². Once cured remove loose grit. Approximate finished coverage rate of grit will be 2.75kg/m² and the remaining grit may be recovered for future use.



Please note that although these systems incorporate an anti-slip surface finish, they cannot eliminate all risk of slipping; this is particularly relevant in the case of ice forming on the roof surface. Careful consideration should be given to roof falls and drainage on any balcony or walkway. Please contact Polyroof Products Limited Technical Department for specific advice.