

# POLYROOF BUTYL BOLT TAPE

## TECHNICAL DATA SHEET

Version: 2.0  
Dated: 13/05/2022

### Introduction

A key part of system application to metal gutters, butyl tapes are applied to bolt heads and lap joints prior to applying local reinforcements and / or coating.

Polyroof Butyl Bolt Tape is a self-adhesive butyl rubber compound tape with a paper release backing.

### Key Features

- For use on bolts and fixings, prior to overcoating with liquid waterproofing.
- Integral part of Xtraflex and Roofcoat Elite Systems
- Excellent Self-adhesive properties
- Exceptional adhesion at low temperatures
- High workability, plasticity, and formability

### Product Information



Code	Item	Pack Size	Approx. Pack Coverage
104402	Butyl Bolt Tape (50mm x 15m)	Each	300 bolt heads
104402	Butyl Bolt Tape (50mm x 15m)	6 Rolls	1800 bolt heads

### Compatible Polyroof Systems

Butyl Bolt Tape can be used on the following systems:

- Roofcoat Elite System
- Xtraflex System

Consult Polyroof Technical Services for usage advise.

### Product Usage

Polyroof Butyl Bolt Tape is applied onto roof sheet and gutter bolts, prior to application of liquid applied waterproofing systems. The tape is an integral part of the Protec Xtraflex gutter system and the Roofcoat Elite pitched roof system – detailed specifications for these systems are available from Polyroof Technical Services.

Guidance, as regards ensuring suitability of application and correct selection of liquid applied waterproofing system should always be sought from Polyroof Technical Services.

### Technical Data

Characteristic	Value
Compound type / colour	Sealing by compression butyl rubber adhesive / Grey
Solids	100%
90° peel adhesion	20 N/25mm
Probe tack	6.4 N
Elasticity - maximum strength	340 N
Shear stress	100 min.
Compression 5kg at 5°C	0.9mm/20'
Compression 5kg at 23°C	2.5mm/20'
Compression resistance 50% at -15°C	12 N/mm
Vertical flow	0mm
Application temperature range	+5°C / +40°C
Service temperature range	-30°C / +90°C

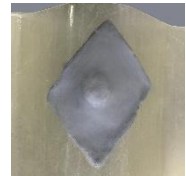
### Application

Polyroof Butyl Bolt Tape should be applied at temperatures between 5°C -- 40°C.

Unroll the tape and cut to the desired length.

Note: For standard roof bolts on pitched sheeted roof a 50mm x 50mm tape will be adequate.

To encapsulate protrusions such as bolts: Remove the release paper and place centrally and diagonally over the bolt (see picture right). Press firmly and mould into place. Finish smoothly onto the surface.



### Preparation and Installation

Polyroof Butyl Bolt Tape is compatible with most building materials. All corrosion should be removed from metals before application. Ensure all loose and flaking material is removed. The surface should be clean, dry, smooth, and free of dust.

Bare metal surfaces and highly porous surfaces should be primed with appropriate primer – consult Polyroof Technical services.

Most plastic-coated metal surfaces, such as plastisol, will not require priming; a solvent wipe should suffice. However, because of the variances among these types of substrates, an adhesion test is always recommended.

# POLYROOF BUTYL BOLT TAPE

## TECHNICAL DATA SHEET

Version: 2.0  
Dated: 13/05/2022

### Storage and Handling

Store in dry conditions, at moderate temperatures (maximum 40°C) in a closed outer wrap.

The product should be used within 12 months of purchase.

### Health and Safety

Safety Data Sheets available on request.

### Technical Assistance

For further information, please contact Polyroof Technical Services on 0800 801 890, More information can also be found at [www.polyroof.co.uk](http://www.polyroof.co.uk).